

PYROTEK CAPTIVATE RANGE

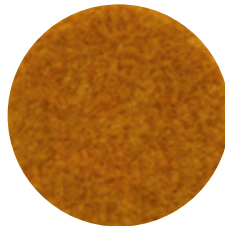
for Echohush Board and Echohush Panel



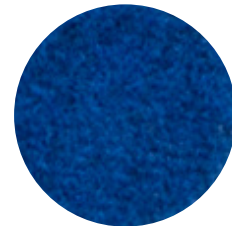
ICE



APPLE



CITRUS



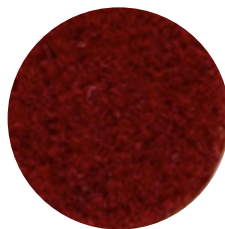
OCEAN



WHEAT



PLUM



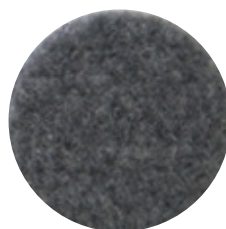
POMEGRANATE



MIDNIGHT



GRANITE



PLATINUM



ASH

DISCLAIMER: Electronic reproduction of colours can vary dramatically. We strongly advise that you view actual samples before final selection. Please contact your local Pyrotek representative for non-standard colours.

For further information
and contact details,
please visit our website
pyroteknc.com

Caveats: Specifications are subject to change without notice. The data in this document is typical of average values based on tests by independent laboratories or by the manufacturer and are indicative only. Materials must be tested under intended service conditions to determine their suitability for purpose. The conclusions drawn from acoustic test results are as interpreted by qualified independent testing authorities. Nothing here releases the purchaser/user from responsibility to determine the suitability of the product for their project needs. Always seek the opinion of your acoustic, mechanical and fire engineer on data presented by the manufacturer. Due to the wide variety of individual projects, Pyrotek is not responsible for differing outcomes from using their products. Pyrotek disclaims any liability for damages or consequential loss as a result of reliance solely on the information presented. No warranty is made that the use of this information or of the products, processes or equipment to which this Information Page refers will not infringe any third party's patents or rights. **DISCLAIMER:** This document is covered by Pyrotek standard Disclaimer, Warranty and © Copyright clauses. See pyroteknc.com/disclaimer.

