

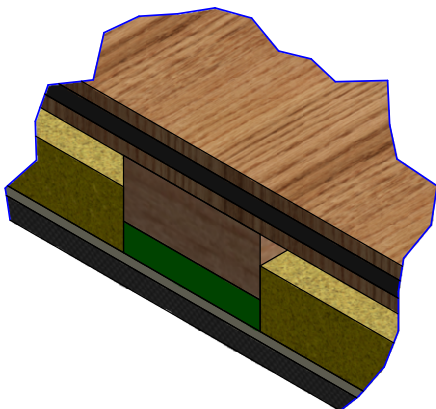
SUBDUE

This Installation Guide provides a quick reference for installation. Contact your local Pyrotek office for more information.

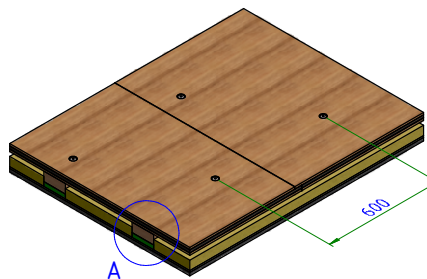


SUBDUE FLOATING FLOOR
METAL DECK

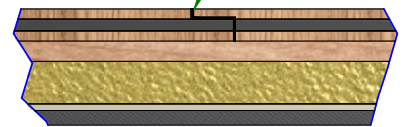
DETAIL A



SAMPLE ISOMETRIC VIEW

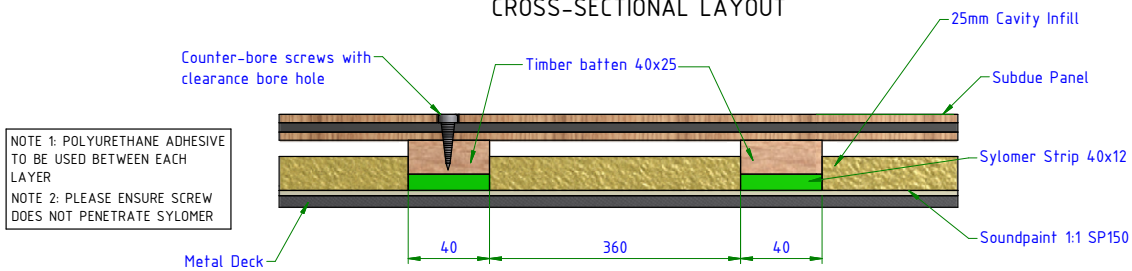


100mm overlap
of top subdue board.



DETAIL OF JOINTS

CROSS-SECTIONAL LAYOUT



NOTE 1: POLYURETHANE ADHESIVE TO BE USED BETWEEN EACH LAYER
NOTE 2: PLEASE ENSURE SCREW DOES NOT PENETRATE SYLOMER

Please refer to our website pyroteknc.com for latest information

